

Weatherproof Outlet Boxes

Features and Benefits:

- Durable die cast aluminum construction for long product life
- Powder paint finish for corrosive environments
- Plugs supplied as standard with 1/2" and 3/4" hubs are non-metallic, 1" hubs are zinc die cast
- Boxes supplied with mounting feet
- Tapered NPT hubs

Materials and Finishes:

- Boxes: Die Cast Aluminum
- Self Closing Covers: Zinc Die Cast
- Toggle Switch Covers: Stamped Aluminum
- Blank Covers: Steel

Certifications and Compliances:

- UL Standard UL514A
- UL Listed File No. E15022
- cUL Standard CSA-C22.2 No 18.1-04
- Suitable for wet locations

SINGLE GANG – 18.0 CUBIC INCH CAPACITY – 2" DEEP

CAST ALUMINUM – UL LISTED FOR WET LOCATIONS



TP7010 – TP7012



TP7026, TP7034



TP7042, TP7050



TP7058, TP7066

Cat. #	Description	Outlet Holes	Color	Unit Qty.	Wt. Lbs. Per 100
TP7010	With Lugs	3 – 1/2"	Gray	50	58.3
TP7011	With Lugs	3 – 1/2"	White	50	58.3
TP7012	With Lugs	3 – 1/2"	Bronze	50	58.3
TP7018	With Lugs	3 – 3/4"	Gray	50	58.3
TP7026	With Lugs	4 – 1/2"	Gray	50	58.3
TP7034	With Lugs	4 – 3/4"	Gray	50	58.3
TP7042	With Lugs	5 – 1/2"	Gray	50	58.3
TP7050	With Lugs	5 – 3/4"	Gray	50	58.3
TP7058	Side Entry, With Lugs	5 – 1/2"	Gray	50	58.3
TP7066	Side Entry, With Lugs	5 – 3/4"	Gray	50	58.3

SINGLE GANG – 24.0 CUBIC INCH CAPACITY – 2 5/8" DEEP

CAST ALUMINUM – UL LISTED FOR WET LOCATIONS



TP7074, TP7078, TP7082

Cat. #	Description	Outlet Holes	Color	Unit Qty.	Wt. Lbs. Per 100
TP7074	With Lugs	3 – 1/2"	Gray	25	80
TP7078	With Lugs	3 – 3/4"	Gray	25	80
TP7082	With Lugs	3 – 1"	Gray	25	80

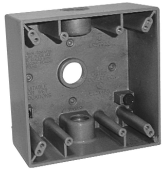


Weatherproof Outlet Boxes

TWO GANG – 30.5 CUBIC INCH CAPACITY

2" DEEP, ALL TWO GANG BOXES HAVE 2 MOUNTING LUGS AS STANDARD
CAST ALUMINUM – UL LISTED FOR WET LOCATIONS

CP



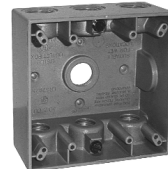
TP7086 – TP7090



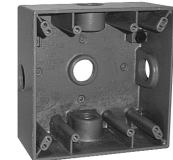
TP7094, TP7098



TP7102, TP7106



TP7110, TP7114



TP7118, TP7122

Cat. #	Description	Unit Qty.	Color	Wt. Lbs. Per 100
TP7086	3 – 1/2" Holes	10	Gray	83.3
TP7087	3 – 1/2" Holes	10	White	83.3
TP7088	3 – 1/2" Holes	10	Bronze	83.3
TP7090	3 – 3/4" Holes	10	Gray	83.3
TP7094	4 – 1/2" Holes	10	Gray	83.3
TP7098	4 – 3/4" Holes	10	Gray	83.3
TP7102	5 – 1/2" Holes	10	Gray	83.3
TP7106	5 – 3/4" Holes	10	Gray	83.3
TP7110	7 – 1/2" Holes	10	Gray	83.3
TP7114	7 – 3/4" Holes	10	Gray	83.3
TP7118	5 – 1/2" Holes	10	Gray	83.3
TP7122	5 – 3/4" Holes	10	Gray	83.3

TWO AND THREE GANG DEEP

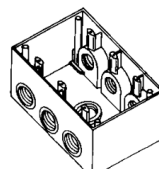
2 5/8" DEEP, ALL BOXES ARE STANDARD WITH MOUNTING LUGS
CAST ALUMINUM – UL LISTED FOR WET LOCATIONS



TP7126, TP7130, TP7134



TP7137, TP7138, TP7142



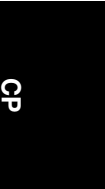
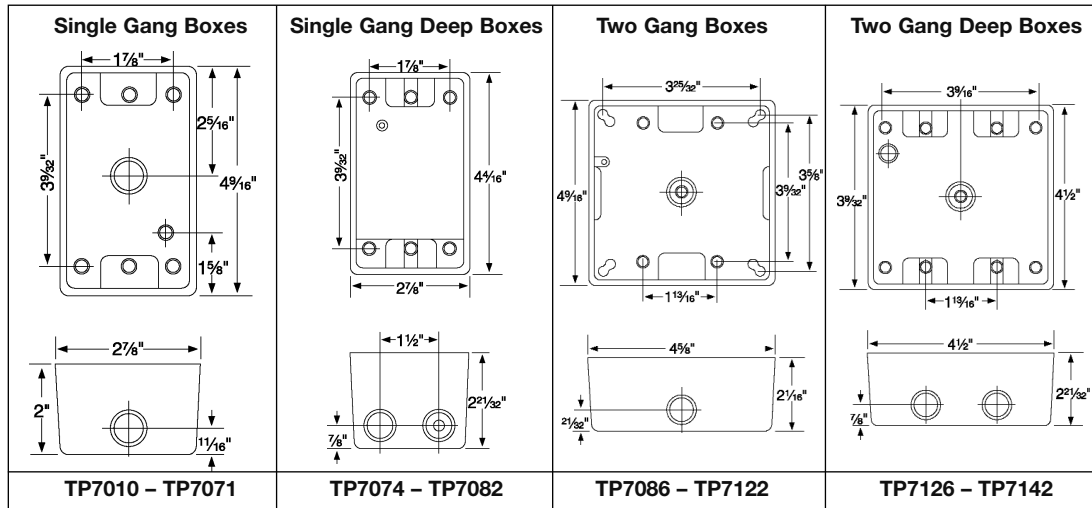
TP7143, TP7144

Cat. #	Description	Color	Unit Qty.	Capacity Cu. In.	Wt. Lbs. Per 100
TWO GANG DEEP WEATHERPROOF OUTLET BOXES					
TP7126	5 – 1/2" Holes	Gray	6	37	140
TP7130	5 – 3/4" Holes	Gray	6	37	140
TP7134	5 – 1" Holes	Gray	6	37	140
TP7137	7 – 1/2" Holes	Gray	6	37	140
TP7138	7 – 3/4" Holes	Gray	6	37	140
TP7142	7 – 1" Holes	Gray	6	37	140
THREE GANG DEEP WEATHERPROOF OUTLET BOXES					
TP7143	7 – 3/4" Holes	Gray	5	59	159
TP7144	7 – 1" Holes	Gray	5	59	159

Weatherproof Outlet Boxes

Dimensions

In Inches:



ONE & TWO GANG WEATHERPROOF EXTENSIONS

1" DEEP, DIE-CAST ALUMINUM EXTENSION RING
GASKET AND MOUNTING SCREWS INCLUDED WITH COVER
UL LISTED FOR WET LOCATIONS



TP7120



TP7123

Cat. #	Description	Color	Unit Qty.	Capacity Cu. In.	Wt. Lbs. Per 100
TP7120	Single Gang	Gray	25	9	27.2
TP7123	Two Gang	Gray	10	10	27.2

EXTENSION ADAPTER

DIE-CAST ALUMINUM, UL LISTED FOR WET LOCATIONS 3 CLOSURE PLUGS,
MOUNTING SCREW AND GASKET INCLUDED WITH COVER



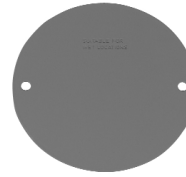
Cat. #	Description	Color	Unit Qty.	Capacity Cu. In.	Wt. Lbs. Per 100
TP7173	4 - 1/2" Holes	Gray	25	9.5	23.6
TP7174	4 - 3/4" Holes	Gray	25	13.0	27.8

Weatherproof Outlet Boxes

CP

4" ROUND – 15.5 CUBIC INCH CAPACITY

1½" DEEP, DIE-CAST ALUMINUM, UL LISTED FOR WET LOCATIONS
 4 CLOSURE PLUGS AND GROUND SCREW INCLUDED WITH BOX
 GASKET AND 2 MOUNTING SCREWS INCLUDED WITH COVER



Cat. #	Side Holes	Back Hole	Unit Qty.	Color	Wt. Lbs. Per 100
TP7146	4 – ½"	½"	25	Gray	79.2
TP7148	4 – ½"	½"	25	White	79.2
TP7149	4 – ½"	½"	25	Bronze	79.2
TP7150	4 – ¾"	¾"	25	Gray	79.2
TP7158	Blank Cover Plate		50	Gray	20.8
WITH BLANK PLATE					
TP7147	4 – ½"	½"	24	Gray	100
TP7151	4 – ¾"	¾"	24	Gray	100
2" DEEP ROUND WEATHERPROOF OUTLET BOX EXTENSION (18.3 CUBIC INCH CAPACITY)					
TP7152	4 – ½"	—	25	Gray	58.3

Dimensions

In Inches:

