

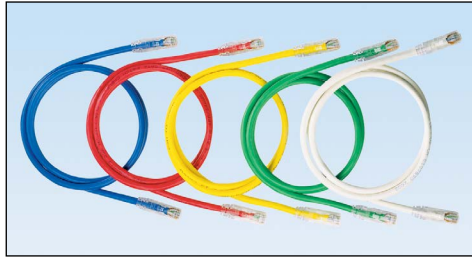
NetKey® Category 6 UTP Patch Cords

PANDUIT®

DATA SHEET

specifications

Category 6/Class E patch cords are constructed of UTP 24 AWG stranded copper cable and a modular plug at each end. Patch cords are used in all work area outlets and patch panels. Patch cords are wired to be compatible with both T568A and T568B wiring schemes.



technical information

Category 6/Class E performance:	Exceeds ANSI/TIA-568-C.2 Category 6 and ISO 11801 Class E channel requirements at swept frequencies up to 250 MHz Meets ANSI/TIA-568-C.2 and ISO 11801 Category 6 component requirements at swept frequencies up to 250 MHz
Cable diameter:	0.235 in. (6.0mm) nominal
FCC compliance:	Complies with ANSI/TIA-1096A (formerly FCC Part 68); contacts plated with 50 microinches of gold
IEC compliance:	Meets IEC 60603-7
PoE compliance:	Supports IEEE 802.3af/802.3at and proposed 802.3bt type 3 and type 4 PoE applications
Safety compliance:	cULus Listed; UL 1863 and CAN/CSA-C22.2 (UL File E129886)
RoHS compliance:	Compliant
Flammability rating:	CM rated

key features and benefits

100% performance tested	Confidence that each patch cord delivers specified performance
Patented tangle free latch	Prevents snags and provides easy release
Slender strain relief boot	Provides easy access in high-density applications
Identification	Provides identification of performance level, length, and quality control number for future traceability
Variety of colors and lengths available	Meets individual length and color-coding requirements

applications

Applications include:

- Ethernet 10BASE-T, 100BASE-T (Fast Ethernet), and 1000BASE-T (Gigabit Ethernet)
- 155 Mb/s ATM, 622 Mb/s ATM, 1.2 Gb/s ATM
- Token Ring 4/16
- Voice over internet protocol (VoIP)

www.panduit.com

NetKey® Network Components

NetKey® Category 6 Patch Cords

Foot lengths: NK6PC3*Y
Meter lengths: NK6PC1M^Y

NetKey® Category 6 Jack Modules

Module: NK688M**
Convenience pack of 25 modules: NK688M**-Q

NetKey® Category 6 Punchdown Patch Panels

12-port: NK6PPG12WY
24-port, 1 RU: NK6PP24P
48-port, 2 RU: NK6PP48P

*For standard lengths other than 3 feet (5, 7, 10, 14 or 20) change the length designation in part number to the desired length. For standard cable colors other than Off White, add suffix BU (Blue), GR (Green), RD (Red), or YL (Yellow) before the Y at the end of the part number. For example, the part number for a blue 5 foot patch cord is NK6PC5BUY.

^For standard lengths other than 1 meter (2, 3, 4 or 5) change the length designation in part number to the desired length. For standard cable colors other than Off White, add suffix BU (Blue), GR (Green), RD (Red), or YL (Yellow) before the Y at the end of the part number. For example, the part number for a blue 5 meter patch cord is NK6PC5MBUY.

**To designate a color, add suffix IW (Off White), EI (Electric Ivory), IG (Int'l Gray), WH (White), BL (Black), OR (Orange), RD (Red), BU (Blue), GR (Green), or YL (Yellow).